

CORE PC 2 Installation Instructions v2.0.63

Installing CORE PC from a download link

If you have any questions please email us at support@coreims.co.uk

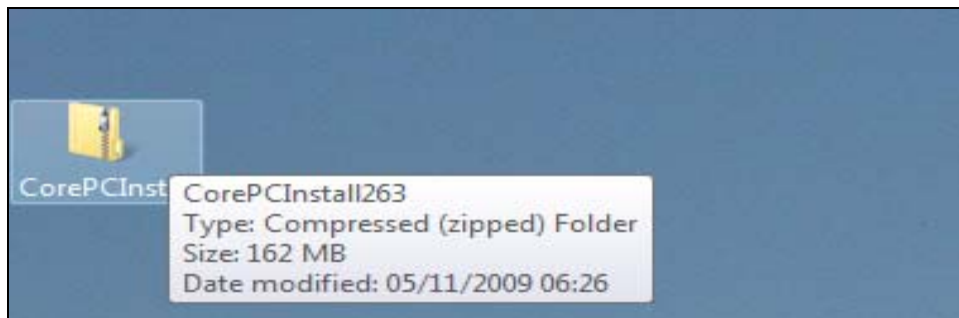
The installation process is relatively simple. Please note that you will need to carry out all the steps below whilst logged in to the computer as an “Administrator”. If you don't know how to do this you should contact your IT department. Before installing CORE PC 2 close all running applications (Word, Outlook etc.). If you use firewall software on your computer it should be disabled for the entire the installation process.

The following instructions will help to guide you through the process of installing CORE PC from a download link, and include notes on Windows Vista and Windows 7 installation. Please note they may vary slightly depending on your operating system e.g. Windows XP; Windows Vista etc., and whether you use a proprietary file compression programme such as WinZip or 7-Zip.

If you use a 64bit operation system please contact us at support@coreims.co.uk

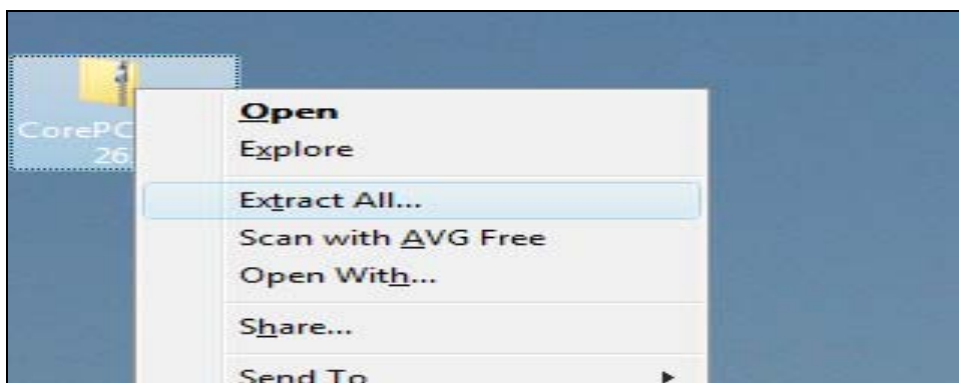
Installing CORE PC on a single PC from a download link

1. Click on the link <http://www.coreims.co.uk/corepcdownloads/CorePCInstall263.zip>
2. From the “File Download” options choose the “Save” option, and save the file to your desktop. This will start the download process which should typically take between 5 – 15 minutes, but may take longer on machines with a slow internet connection.
3. Once downloaded, from your desktop locate the folder named “COREPCInstall263” (zipped folder) – Screenshot 1.



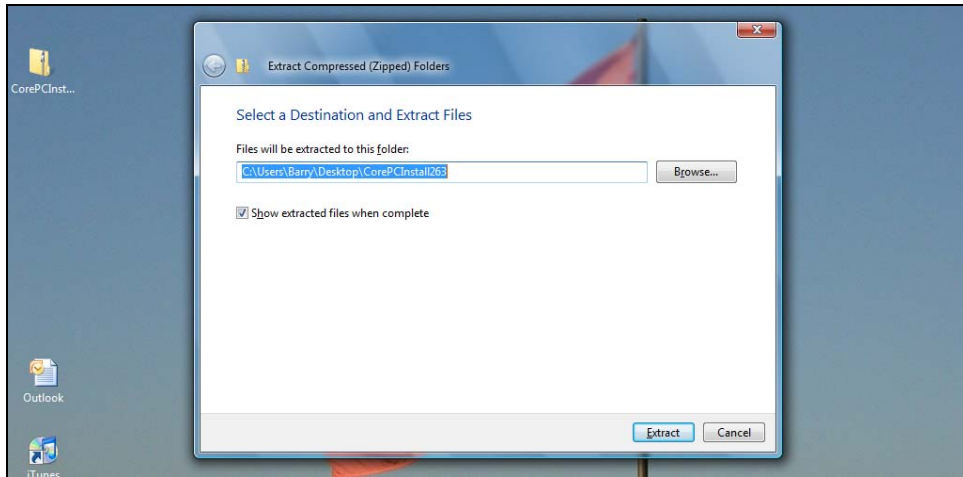
Screenshot 1

4. Right click on the folder and choose the “Extract all” option - Screenshot 2. (this process may vary slightly depending on your file compression program).



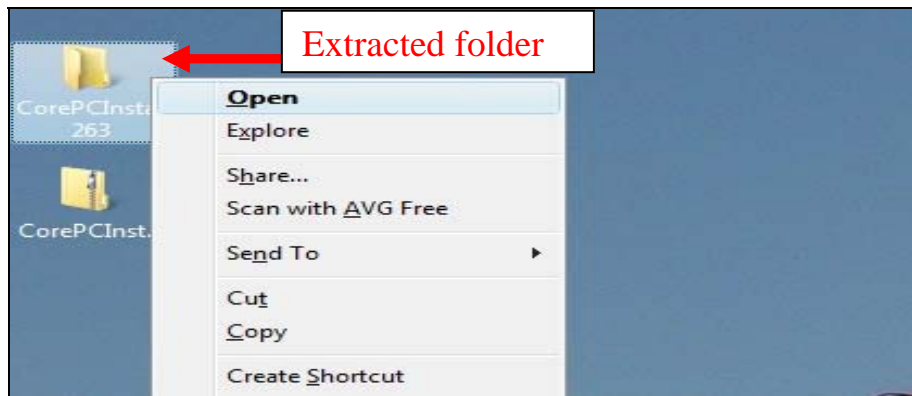
Screenshot 2

5. Select the destination (e.g. your Desktop) and click “Extract.” (Screenshot 3)



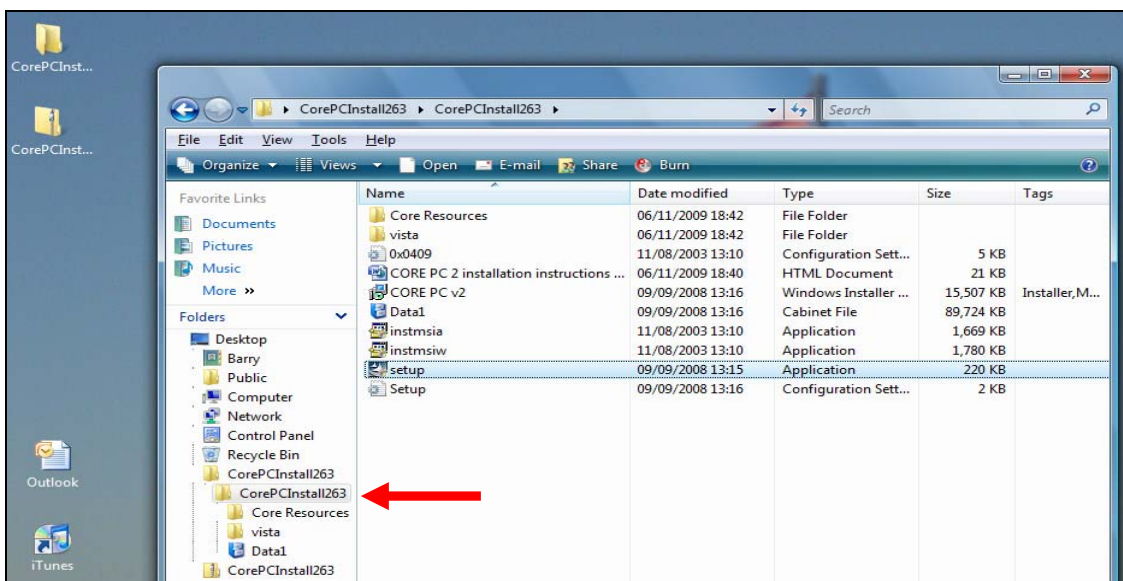
Screenshot 3

6. Right click on the extracted folder named "COREPCInstall263" and select "Open." (Screenshot 4)



Screenshot 4

7. Select the folder "COREPCInstall263" (arrowed in Screenshot 5), and from the list double click on the "setup" application (depending on your windows settings this may appear as "setup.exe").



Screenshot 5

8. Follow the on screen instructions, choosing the **"Typical"** installation option when prompted. Allow your computer to restart if you are prompted to do so.
9. Once the initial installation is complete you can run CORE PC 2 from Start>Programs or from its icon on the desktop. The first time you run CORE PC 2 it will install a program called SQL Server, which it uses to store its data. This may take a few minutes and you may have to restart your PC when it has finished. SQL Server install is optimistic in estimating the time remaining. It is normal for an estimate of "15 secs remaining" to actually take a minute or more.
10. Once the SQL Server installation is complete, run CORE PC 2 again and it will automatically configure a blank CORE PC database. Once this is completed click "OK" on the "Database Creation Screen" that appears and you will arrive at the CORE PC 2 login screen. If any actions on the "Database Creation Screen" are shown as "failed" note them down and contact us.
11. CORE PC 2 is now ready to be licensed. Run CORE PC 2, and when prompted to enter your license details click "Yes". Note the Product ID and email it to support@coreims.co.uk along with the name of your service and we will respond with your license details.
12. Once CORE PC 2 is licensed, login with the username "Admin" and the password "kipper".

For help using CORE PC 2 and the Core System please consult the help files, which can be accessed in CORE PC 2 by clicking the Help menu. If you can't find the answer you're looking for please email us at support@coreims.co.uk

Network Installation

If CORE PC needs to be accessed from different computers it can be installed on a network so that individual PC's access the database held on a central server.

Full instructions are available here: http://www.coreims.co.uk/support/data_storage_index.html

Below are basic instructions on how to configure a simple "peer to peer" network installation of CORE PC.

1. On the PC you want to be the database server run the "Typical" installation. This PC will need to be running for any other computer to access CORE PC 2. Alternatively your IT department may have an SQL Server that can be configured to operate as the database server for CORE PC 2.
2. On the database server run svrnetcn.exe to enable TCP/IP network protocol and configure any firewall to allow TCP port 1433 and UDP 1434.
3. On the client PC's run the "Network Client" installation option (making sure the "Server" option is not selected). Once installed run CORE PC 2 from Start>Programs. You will be prompted to enter the information required to connect to the PC you setup in step 1. Enter the correct Server Name (the Network Name or IP address of the "Server" PC) and click OK.
4. Each PC will need a separate License Key. In CORE PC click Tools>"License Information">"Enter New Key" and make a note of the Product ID. Email the Product IDs together with telephone contact details and service name to support@coreims.co.uk. We will create the license information and return it to you.
5. To ensure the configuration is working properly, add a patient record on the "Server" PC instance of CORE PC 2 and ensure that it appears on the "Client" PCs.

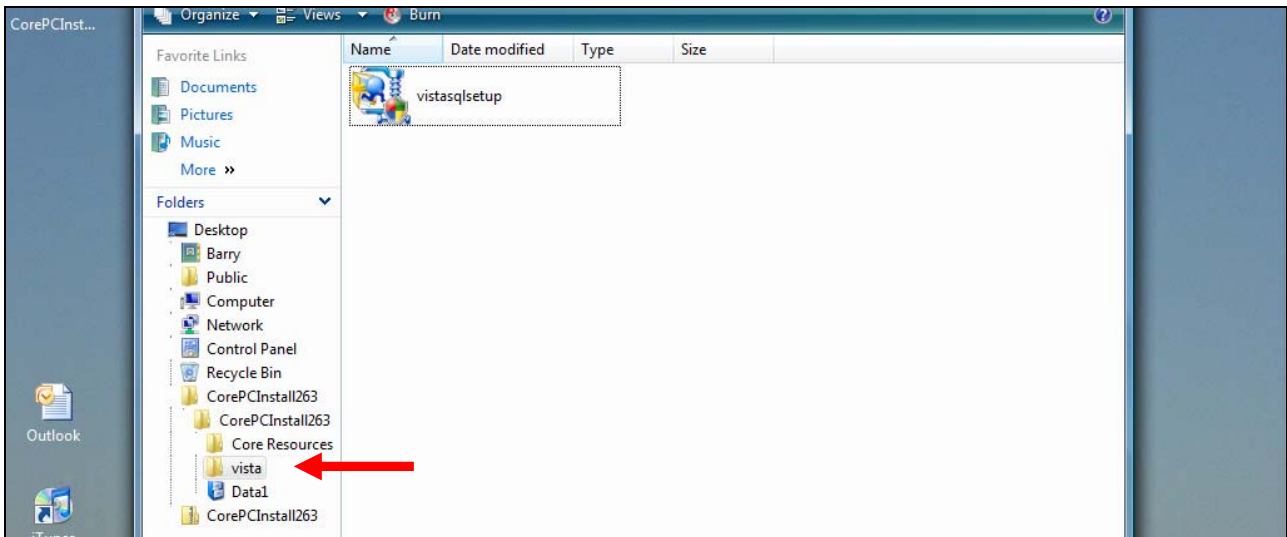
Please email support@coreims.co.uk for further information on network installations of CORE PC.

Notes on Windows Vista and Windows 7

To perform a stand alone install of CORE PC on Windows Vista and Windows 7:

1. Follow steps 1 – 6 above from **Installing CORE PC on a single PC from a download link**

2. Click on the “vista” folder (arrowed in Screenshot 6), and double click on “vistasqlsetup” (note it may also have a “.exe” file extension). If prompted, click Unzip to extract the files, leaving the “Unzip to folder” default values as they are.
3. Once the “vistasqlsetup” is complete, which may take several minutes, select the folder “COREPCInstall263” (arrowed in Screenshot 5), and from the list double click on the “setup” application (note it may also have a “.exe” file extension).
4. Follow the onscreen instructions, being sure to choose the “Network Client” installation option under “Setup Type” when prompted.
5. Follow steps 9 onwards above from **Installing CORE PC on a single PC from a download link**



Screenshot 6